

Issues Associated with Identifying Possible Risks Related to the Use of Tire Crumb & Artificial Turf

Michael Firestone/OCHPEE/OA
Ross Highsmith/NERL/ORD

June 2008



Purpose of this Presentation

- Inform the SPC about the issue.
- Seek feedback on possible plans to collect data to scope the nature and extent of the issue and determine the need for a more robust monitoring study.

Tire Crumb & Artificial Turf Ad Hoc Workgroup

Michael Firestone	OCHPEE/OA
Ross Highsmith	NERL/ORD
Cathy Fehrenbacher	OPPT/OPPTS
John Brink	R-8
Rebecca Derr	R-10
Valerie Zartarian	NERL/ORD
Mark Maddaloni	R-2
Sheila Batka	R-5
Timothy Taylor	OSWER

Communication & Interested Staff

Dale Kemery, Dale Haroski, Melissa Anley-Mills	OPA/OA
Bettina Fletcher	OCHPEE/OA
Elaine Francis, Jacqueline Moya, Brad Schultz, Daniel Chang, Doug Wolf, Ed Heithmar, Roy Fortmann	ORD
Susan Makris, Stan Barone	NCEA/ORD
Mary Mears, Maureen O'Neill, Marie O'Shea, Berry Shore	R2
Sheila Canavan, Priscilla Flattery	OPPT
Patti Tyler, Jaslyn Dobrahner, Anne-Marie Patrie, Alicia Aalto	R-8
Margo Young	R-10
Jacqueline McQueen, Norman Birchfield	OSA
Chris Newman, Paul Ruesch, Susan Mooney, Maryann Suero, Julie Gevrenov	R-5
Peter Grevatt	OSWER

Basic Information

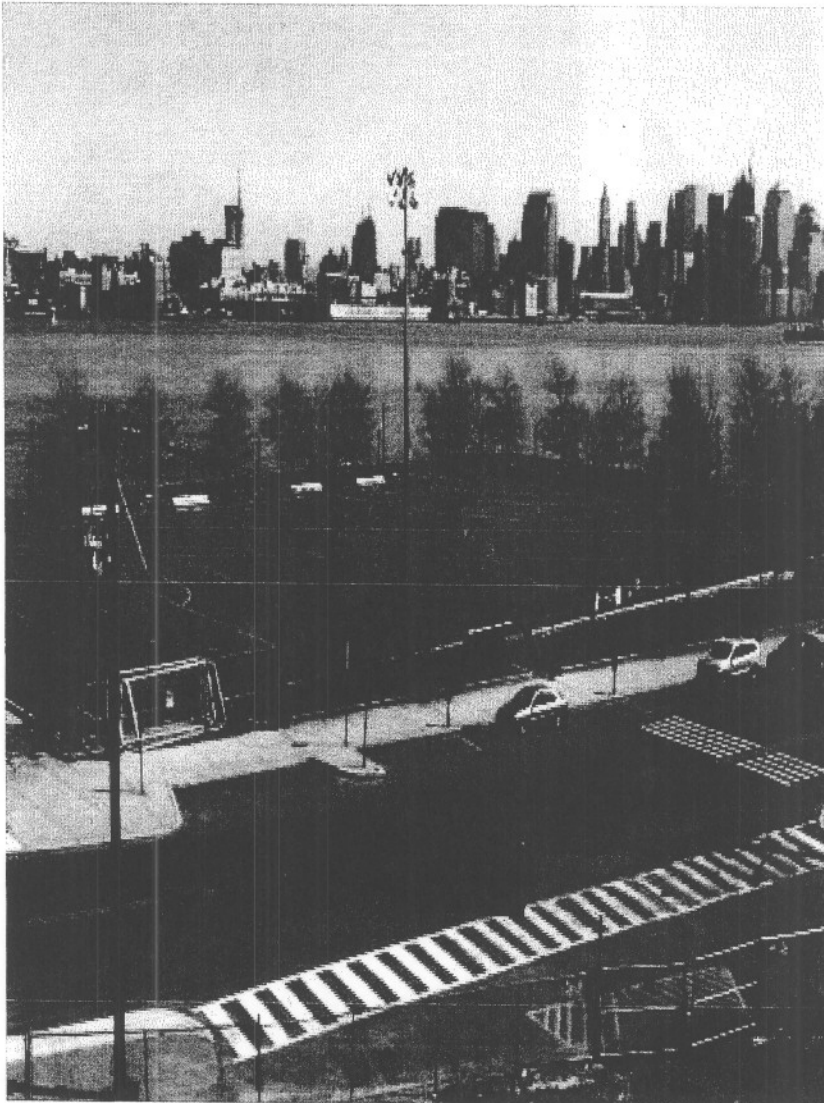
- What is tire crumb?

Answer: Recycled rubber from automotive and truck scrap tires which may be used as ground cover under playground equipment, and as a surface material for running tracks and athletic fields.

- What is known about lead contamination of artificial turf?

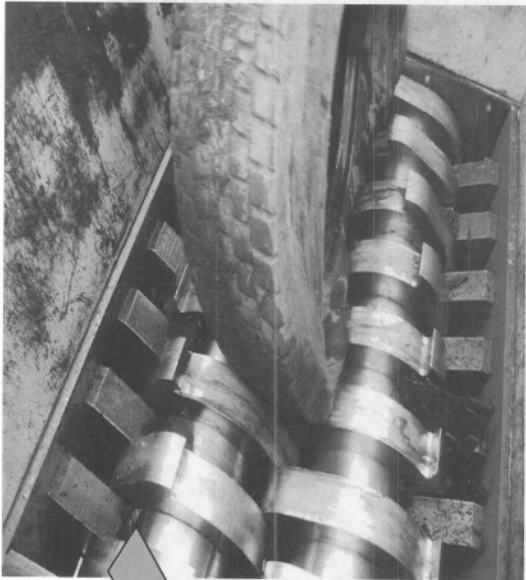
Answer: Pigment containing lead chromate is used in some surfaces to make the turf green -- NJ found lead in both of the nylon fields it tested, but not in any of the 10 polyethylene surfaces tested.

Lead in Artificial Turf



Park in Hoboken was recently closed when New Jersey health officials found up to 10 times the amount of lead that is allowed in soil on any contaminated sites that are being turned into homes.

Recycled Tire Crumb



Drivers for this Issue

- January 2008 request by Steve Tuber, Assistant Regional Administrator Region 8 to OCHPEE/OA to study the problem.
- April study by the state of New Jersey which found 2 of 12 artificial turf fields tested to be contaminated with 10x elevated levels of lead. NJ calls for a CPSC study.
- A May 2008 request by the state of Connecticut to Administrator Johnson for EPA to study the problem.
- March review article in Environmental Health Perspectives.
- Numerous recent press calls and articles (Boston Globe, Washington Post, USA Today,)

EPA Actions in 2008

- February – Formation of Ad Hoc Study Group co-chaired by Ross Highsmith & Michael Firestone
- March/April – Limited scoping study being developed (see next slide)
- May – Communication meeting held to coordinate EPA's message.
- May – OPPT meeting with industry representatives.

Scoping Study Proposal

- Regions asked to collect limited air and wipe samples. Sample collection protocol to be developed.
- ORD will analyze for a limited set of contaminants.
- ORD will estimate childhood exposure using the SHEDS (Stochastic Human Exposure and Dose Simulation) model previously used to estimate exposure to CCA treated decking.
- Based on the results, EPA will consider whether a full scale exposure monitoring and assessment study is needed.

Other Possible Actions

- Hold a workshop with states (NY, NJ, CT, CA, ...), and other federal agencies (CPSC, ATSDR, HUD) to coordinate monitoring and/or risk assessment.
- Develop Fact Sheets and/or a web site to inform the public.
- Conduct a more comprehensive exposure monitoring and assessment study if scoping study shows potential adverse risk.